

ZE|NER

EN

ZE|NER

ZGXC Series

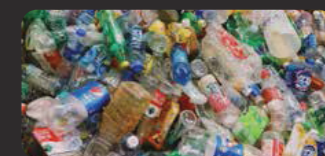
Granulators



www.zellner.cz



PVC



PET



PP Woven bag

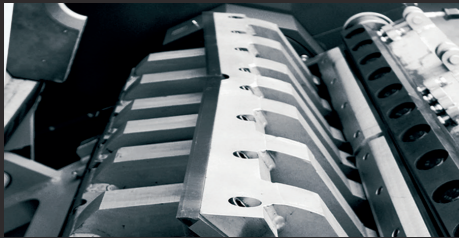


PP Plastic film

ZGXC Series Granulators

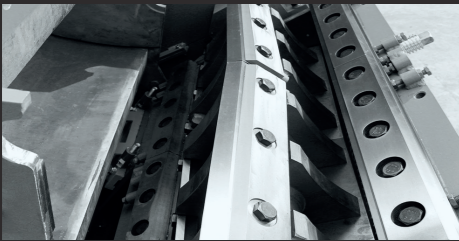
Configurable Rotor Blade Rows

The large diameter rotors of the ZGXC series machines are available with a choice of 5, 7 or 9 rows of rotor blades to suit the specific application. They can therefore achieve the ideal combination of power and cutting efficiency, thus ensuring high throughput volumes and top quality granulated products.



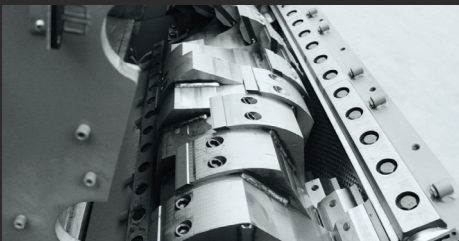
V-Rotor

Our standard open V-Rotor with forward set blades is suitable for processing most types of material. The V-cutting (chevron) configuration of the forward set blades creates a highly efficient, double shear, scissor cutting action.



VB-Rotor

The VB-Rotor with rear set blades is intended for lighter duty applications. The greater shear angle achieved by mounting the blade behind the blade holder results in better performance when processing flexible materials such as plastic films.



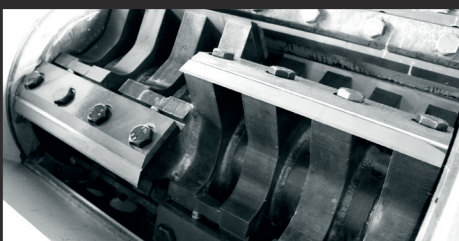
C-Rotor

The C-Rotor is a heavy duty, high inertia, semi-closed shaft design which creates a cascade cutting effect. This rotor design is ideal for processing particularly hard or thicker materials, but is also well suited to processing profiles.



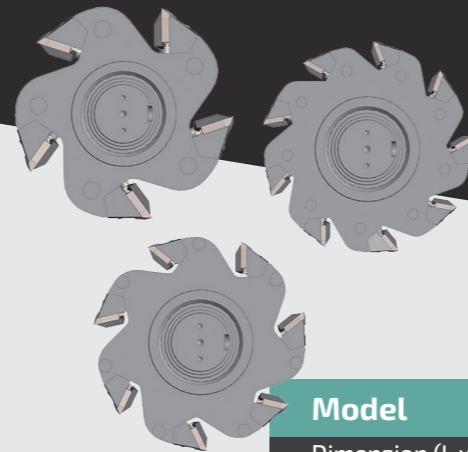
CS-Rotor

The CS-Rotor is a particularly open rotor design which allows more area for the material to fall into between each of the staggered blades. This rotor is ideal when processing hollow & bulky materials.



GMC-Rotor

The GMC rotor is specially designed for film and winding material. The staggered blades can cut off the material easily. The design of the rotor creates a good air stream go through the chamber, reducing heat build up within the chamber to aid cooling.

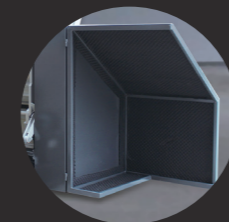


Heavy Duty Granulators

ZGXC Series Heavy Duty Granulators with power ratings of 55kw to 315kw are designed for high throughput processing. With a variety of rotor configurations available, these granulators have a wide range of applications including; hollow and voluminous materials (i.e. plastic barrels, crates and chairs), flexible materials such as films, woven bags and rubber, tougher materials such as profiles, thick sheets, and other general plastics.



Auxiliary Flywheel



Sound Proof Enclosure



Hydraulic Opening Device



Model	ZGXC800	ZGXC1200	ZGXC1200T	ZGXC1600T	ZGXC1200G	ZGXC1600G	ZGXC2000G
Dimension (L x W x H) (mm)	2165 x 1780 x 3090	2165 x 2180 x 3090	2490 x 2270 x 3330	2490 x 2670 x 3330	2650 x 2470 x 3900	2650 x 2870 x 3900	2650 x 3270 x 3900
Hopper Opening (L x H) (mm)	750 x 820	1150 x 820	1150 x 1020	1550 x 1020	1160 x 1150	1560 x 1150	1960 x 1150
Rotation Diameter (mm)	Ø 520	Ø 520	Ø 660	Ø 660	Ø 800	Ø 800	Ø 800
Operation Length (mm)	800	1200	1200	1600	1200	1600	2000
Rotation Speed (RPM)	520	520	520	520	480	480	480
Screen Size (mm)	Ø 12	Ø 12	Ø 12	Ø 12	Ø 12	Ø 12	Ø 12
Number of Rotor Knives (pcs)	5x2	5x2	7x2	7x4	9x2	9x4	9x4
Number of Counter Knives (pcs)	3x1	3x2	3x2	3x2	3x2	3x2	3x4
Main Drive (kW)	55~75	75~90	90~132	110~160	110~160	160~250	250~315
Hydraulic Power Pack (kW)	1.5	1.5	1.5	1.5	1.5	1.5	1.5
Weight (kg)	Approx 4400	Approx 5500	Approx 7250	Approx 8500	Approx 9300	Approx 11800	Approx 15500