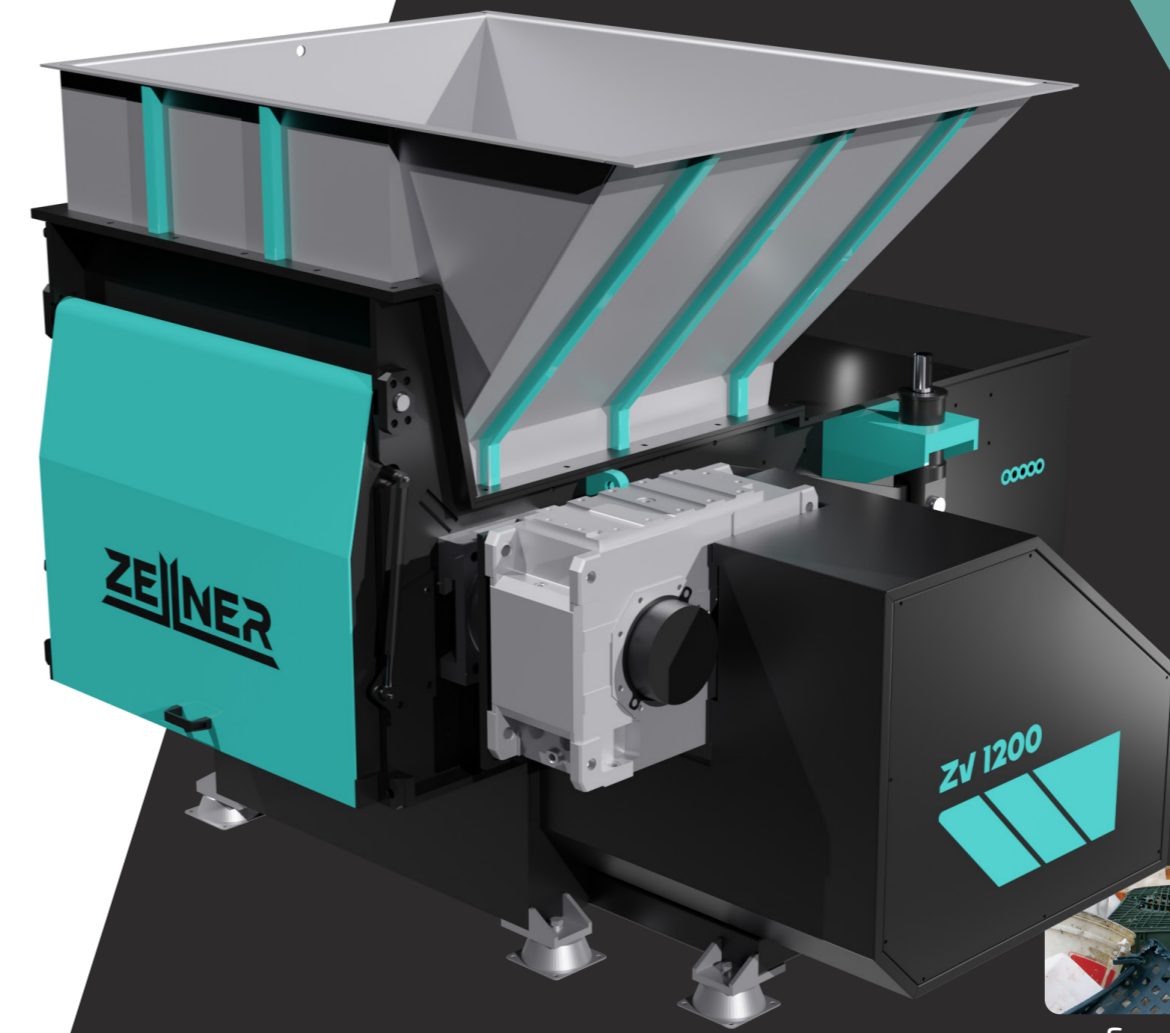


ZELLNER

EN

ZELLNER



ZV Series

Single Shaft Shredder



Scrap Plastic



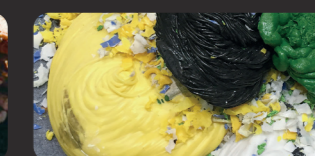
Cables



Pipes



Wood



Plastic Lumps



Plastic Pallets

Zellner Tech Systems
www.zellner.cz
sales@zellner.cz

We reserve the right to make technical changes without prior announcement.
All rights reserved.
04/2026 Zellner Tech Systems

www.zellner.cz

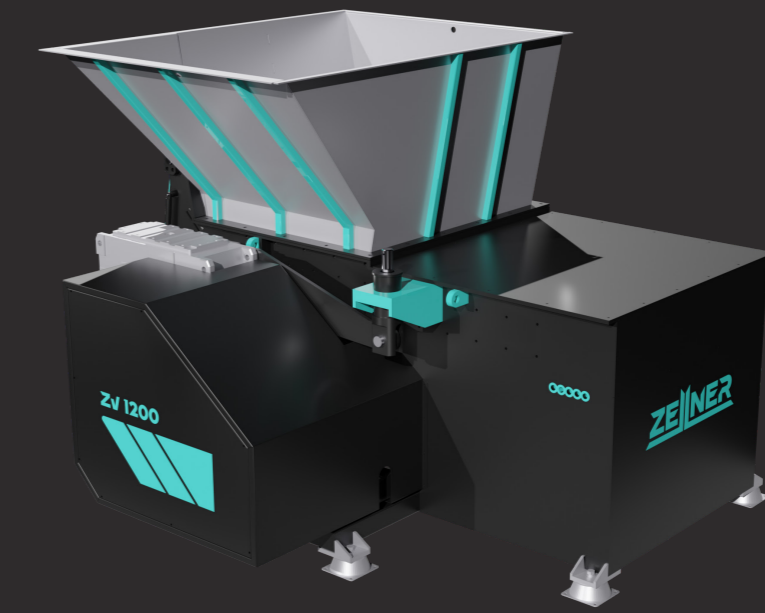
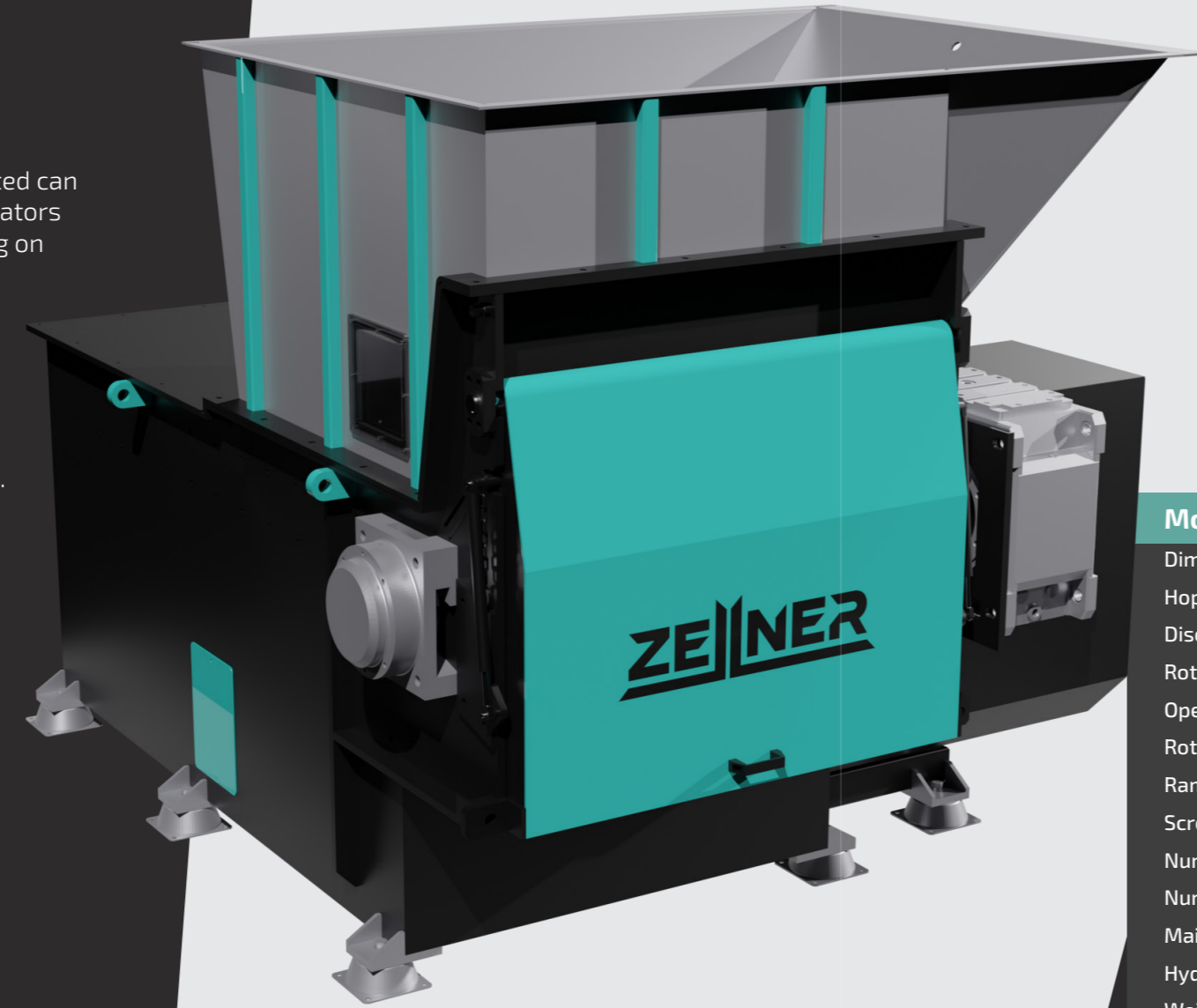
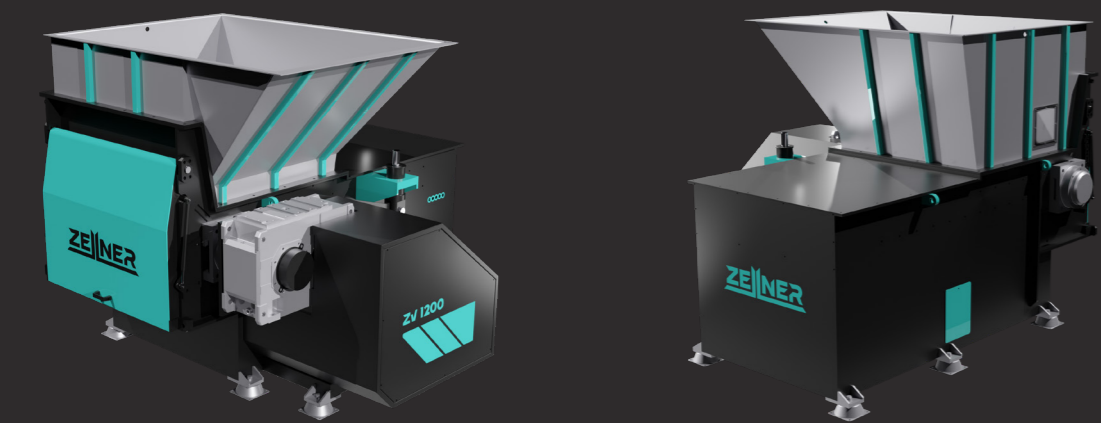
ZV Series

Single Shaft Shredder

ZV Series Single Shaft Shredders are small - medium size reduction machines suitable for processing a wide range of materials to a uniform particle size. The output products created can often be sold as is, or be sent for further processing through additional equipment (granulators briquetters etc). Throughputs typically range between 300kg/hr – 5,000kg/hr+ depending on the machine model, material type, screen size and application.

Typical applications for this versatile range of shredders include:

- Plastics** – Mouldings, Purgings / Lumps, Profiles, Films etc.
- Timber / Wood** – Pallets, Joiners Waste, Green Waste etc.
- Paper & Cardboard** – Confidential Documents, Production Waste, Packaging Materials etc.
- Copper** – Household, Automotive, Telecoms and Industrial Cables including SWA
- Aluminum** – Used Beverage Cans (UBC's), Swarf, Cables etc.
- Textiles** – Carpet (Rolls & Tiles), Garments etc.
- Security Destruction** – Counterfeit Items, Faulty Goods, Out of Date Stocks etc.
- Foams** – Production Waste, Insulation Materials, Product Fillings etc.



Model	ZV600	ZV800	ZV1000	ZV1200	ZV1500
Dimension (L x W x H) (mm)	1820 x 1300 x 1730	2800 x 1800 x 2080	2800 x 1980 x 2080	2800 x 2500 x 2130	2800 x 2750 x 2130
Hopper Opening (L x H) (mm)	1200 x 1090	1500 x 1430	1080 x 1000	1900 x 1430	2100 x 1400
Discharge Height (mm)	485	565	565	565	565
Rotation Diameter (mm)	Φ 220	Φ 400	Φ 400	Φ 400	Φ 400
Operation Length (mm)	600	800	1000	1200	1400
Rotation Speed (RPM)	80	80	80	80	80
Ram (mm)	500	815	815	815	815
Screen Size (mm)	Φ 40	Φ 40	Φ 12	Φ 40	Φ 40
Number of Rotor Knives (pcs)	23+4	35+4	45+4	55+4	78+4
Number of Counter Knives (pcs)	2+2	2+2	4	3+3	3+3
Main Drive (kW)	18	37	45	55	75
Hydraulic Power Pack (kW)	2.25	3.75	3.75	5.5	5.5
Weight (kg)	Approx 1750	Approx 4200	Approx 3980	Approx 5300	Approx 7300