



Zellner Tech Systems
www.zellner.cz
sales@zellner.cz

We reserve the right to make technical changes without prior announcement.
All rights reserved.
08/2025 Zellner Tech Systems

www.zellner.cz

ZGXC Series

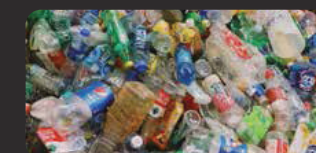
Granulators



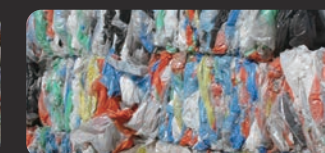
PP Woven bag



PVC



PET



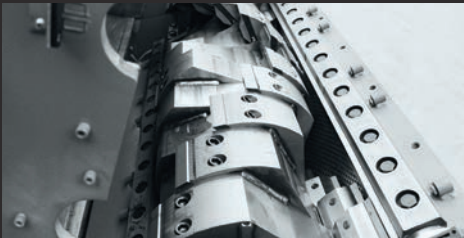
PP Plastic film



V-Rotor
Our standard open V-Rotor with forward set blades is suitable for processing most types of material. The V-cutting (chevron) configuration of the forward set blades creates a highly efficient, double shear, scissor cutting action.



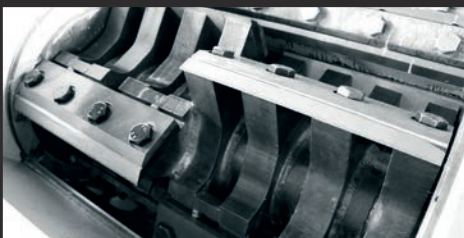
VB-Rotor
The VB-Rotor with rear set blades is intended for lighter duty applications. The greater shear angle achieved by mounting the blade behind the blade holder results in better performance when processing flexible materials such as plastic films.



C-Rotor
The C-Rotor is a heavy duty, high inertia, semi-closed shaft design which creates a cascade cutting effect. This rotor design is ideal for processing particularly hard or thicker materials, but is also well suited to processing profiles.



CS-Rotor
The CS-Rotor is a particularly open rotor design which allows more area for the material to fall into between each of the staggered blades. This rotor is ideal when processing hollow & bulky materials.



GMC-Rotor
The GMC rotor is specially designed for film and winding material. The staggered blades can cut off the material easily. The design of the rotor creates a good air stream go through the chamber, reducing heat build up within the chamber to aid cooling.

ZGXC Series Granulators

Configurable Rotor Blade Rows
The large diameter rotors of the ZGXC series machines are available with a choice of 5, 7 or 9 rows of rotor blades to suit the specific application. They can therefore achieve the ideal combination of power and cutting efficiency, thus ensuring high throughput volumes and top quality granulated products.



Heavy Duty Granulators
ZGXC Series Heavy Duty Granulators with power ratings of 55kw to 315kw are designed for high throughput processing. With a variety of rotor configurations available, these granulators have a wide range of applications including; hollow and voluminous materials (i.e. plastic drums, crates and chairs), flexible materials such as films, woven bags and rubber, tougher materials such as profiles, thick sheets, and other general plastics.



Auxiliary Flywheel



Sound Proof Enclosure



Hydraulic Opening Device



| Model | ZGXC800 | ZGXC1200 | ZGXC1200T | ZGXC1600T | ZGXC1200G | ZGXC1600G | ZGXC2000G |
|--------------------------------|--------------------|--------------------|--------------------|--------------------|--------------------|--------------------|--------------------|
| Dimension (L x W x H) (mm) | 2165 × 1780 × 3090 | 2165 × 2180 × 3090 | 2490 × 2270 × 3330 | 2490 × 2670 × 3330 | 2650 × 2470 × 3900 | 2650 × 2870 × 3900 | 2650 × 3270 × 3900 |
| Hopper Opening (L x H) (mm) | 750 × 820 | 1150 × 820 | 1150 × 1020 | 1550 × 1020 | 1160 × 1150 | 1560 × 1150 | 1960 × 1150 |
| Rotation Diameter (mm) | Ø 520 | Ø 520 | Ø 660 | Ø 660 | Ø 800 | Ø 800 | Ø 800 |
| Operation Length (mm) | 800 | 1200 | 1200 | 1600 | 1200 | 1600 | 2000 |
| Rotation Speed (RPM) | 520 | 520 | 520 | 520 | 480 | 480 | 480 |
| Screen Size (mm) | Ø 12 | Ø 12 | Ø 12 | Ø 12 | Ø 12 | Ø 12 | Ø 12 |
| Number of Rotor Knives (pcs) | 5×2 | 5×2 | 7×2 | 7×4 | 9×2 | 9×4 | 9×4 |
| Number of Counter Knives (pcs) | 3×1 | 3×2 | 3×2 | 3×2 | 3×2 | 3×2 | 3×4 |
| Main Drive (kW) | 55~75 | 75~90 | 90~132 | 110~160 | 110~160 | 160~250 | 250~315 |
| Hydraulic Power Pack (kW) | 1.5 | 1.5 | 1.5 | 1.5 | 1.5 | 1.5 | 1.5 |
| Weight (kg) | Approx 4400 | Approx 5500 | Approx 7250 | Approx 8500 | Approx 9300 | Approx 11800 | Approx 15500 |