



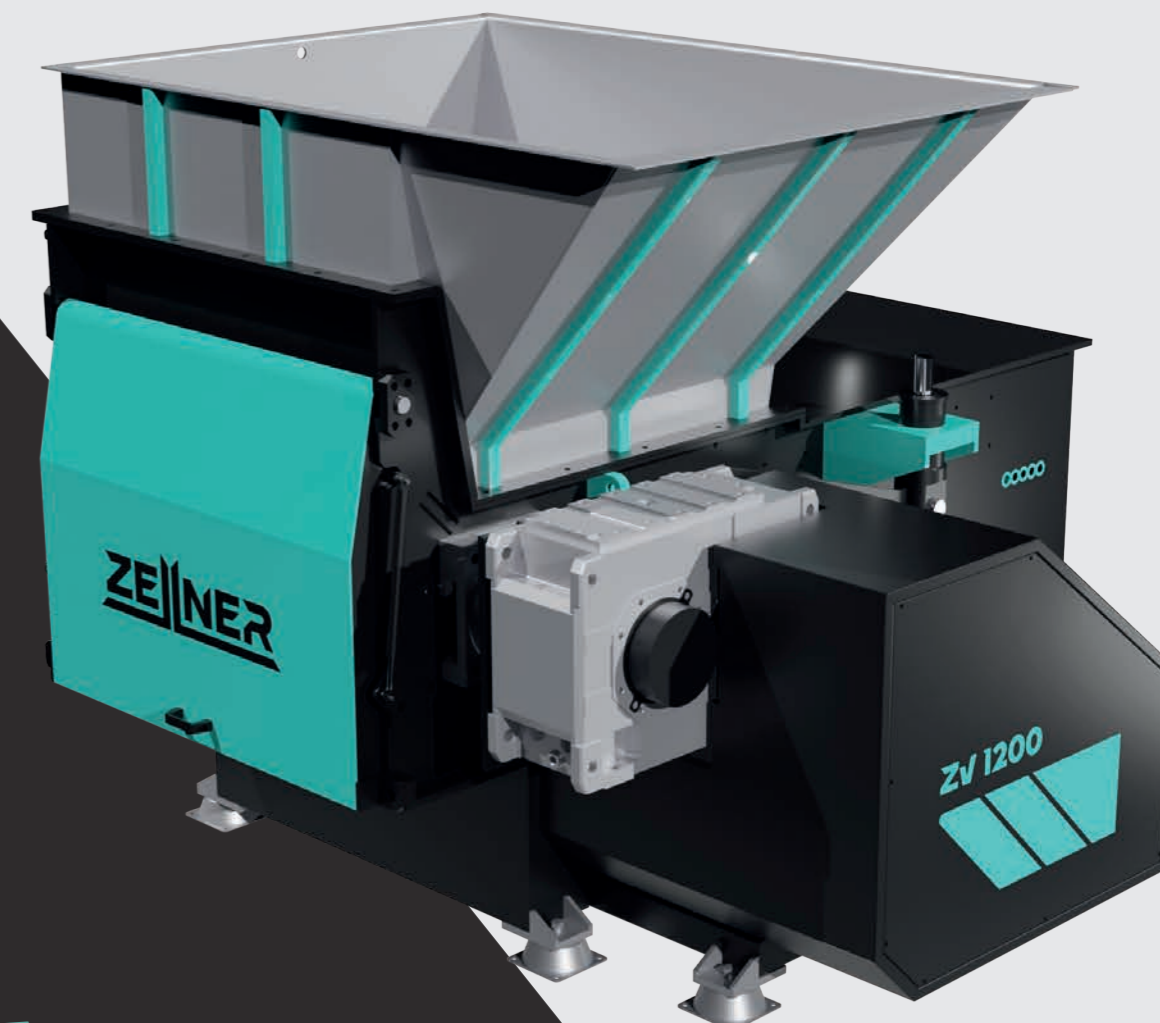
Zellner Tech Systems
www.zellner.cz
sales@zellner.cz

We reserve the right to make technical changes without prior announcement.
All rights reserved.
08/2025 Zellner Tech Systems

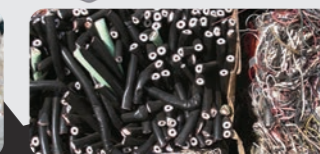
www.zellner.cz

ZV Series

Single Shaft Shredder



Scrap Plastic



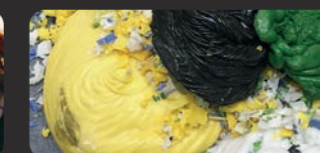
Cables



Pipes



Wood



Plastic Lumps



Plastic Pallets

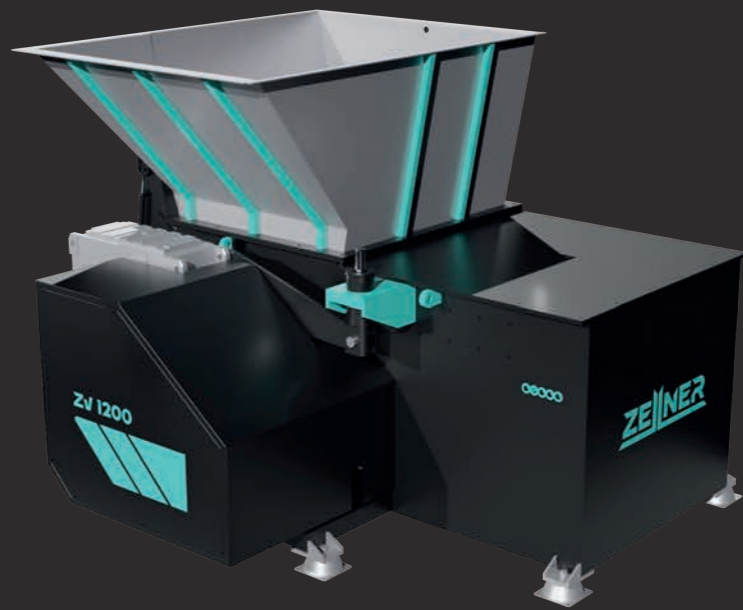
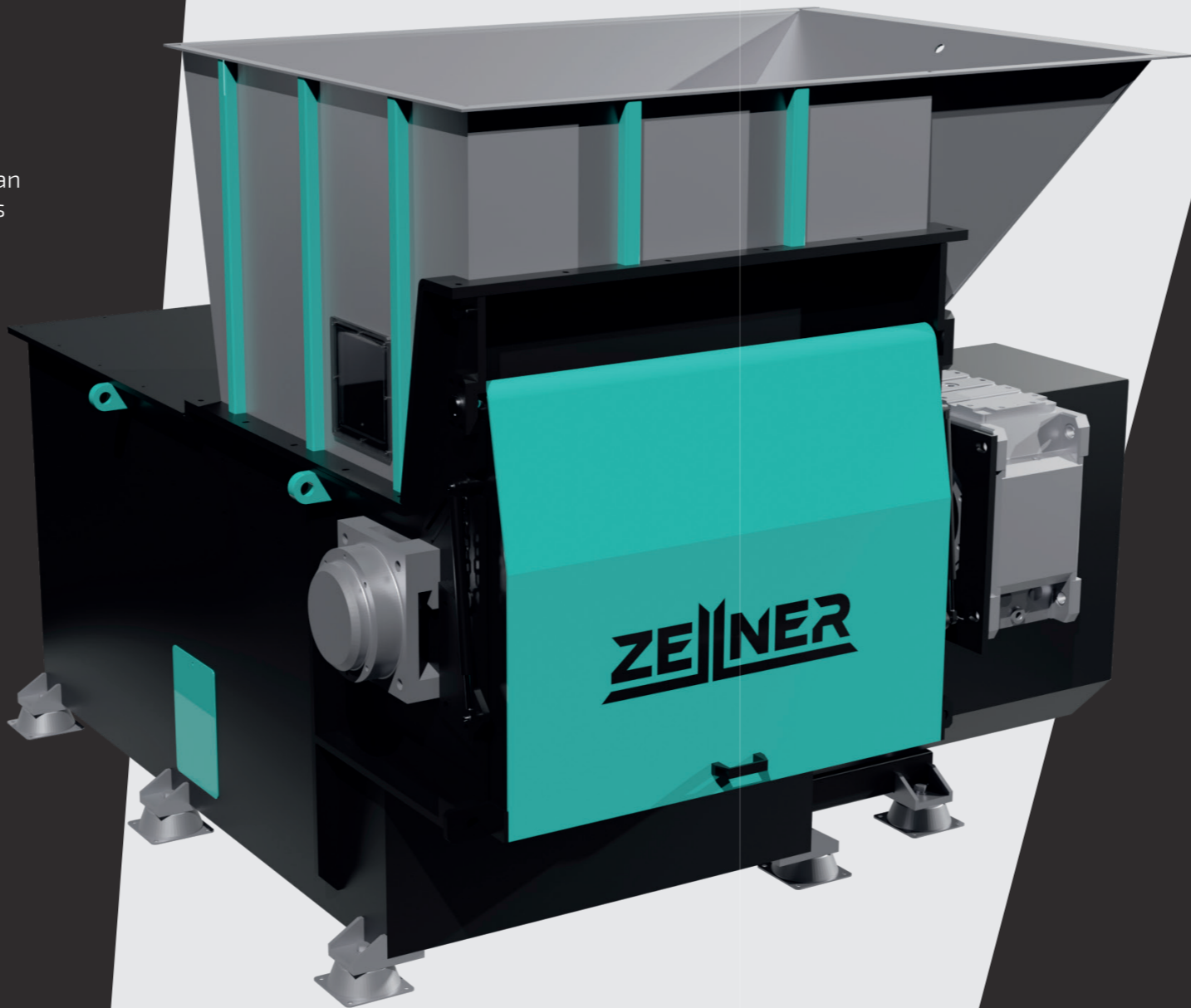
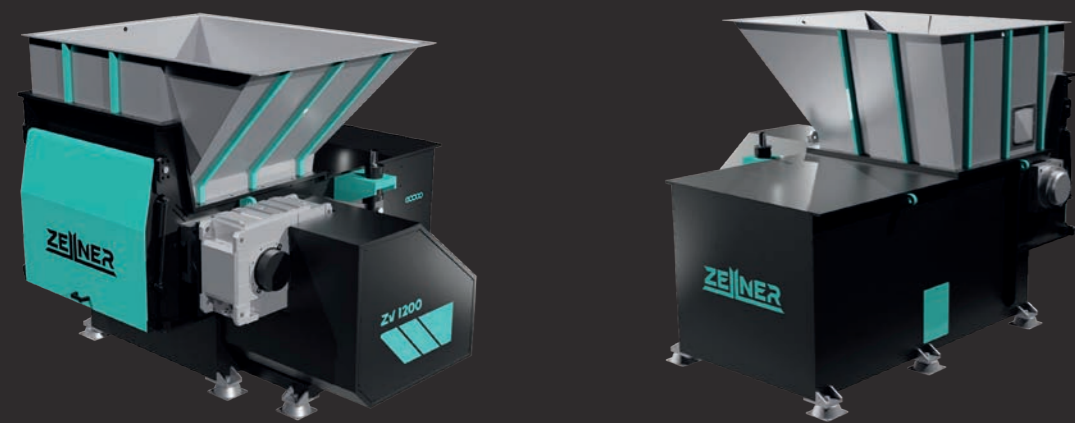
ZV Series

Single Shaft Shredder

ZV Series Single Shaft Shredders are small - medium size reduction machines suitable for processing a wide range of materials to a uniform particle size. The output products created can often be sold as is, or be sent for further processing through additional equipment (granulators briquetters etc). Throughputs typically range between 300kg/hr – 5,000kg/hr+ depending on the machine model, material type, screen size and application.

Typical applications for this versatile range of shredders include:

- Plastics** – Mouldings, Purgings / Lumps, Profiles, Films etc.
- Timber / Wood** – Pallets, Joiners Waste, Green Waste etc.
- Paper & Cardboard** – Confidential Documents, Production Waste, Packaging Materials etc.
- Copper** – Household, Automotive, Telecoms and Industrial Cables including SWA
- Aluminum** – Used Beverage Cans (UBC's), Swarf, Cables etc.
- Textiles** – Carpet (Rolls & Tiles), Garments etc.
- Security Destruction** – Counterfeit Items, Faulty Goods, Out of Date Stocks etc.
- Foams** – Production Waste, Insulation Materials, Product Fillings etc.



Model	ZV600	ZV800	ZV1200	ZV1500
Dimension (L x W x H) (mm)	1820 × 1300 × 1730	2800 × 1800 × 2080	2800 × 2500 × 2130	2800 × 2750 × 2130
Hopper Opening (L x H) (mm)	1200 × 1090	1500 × 1430	1900 × 1430	2100 × 1400
Discharge Height (mm)	485	565	565	565
Rotation Diameter (mm)	Φ 220	Φ 400	Φ 400	Φ 400
Operation Length (mm)	600	800	1200	1400
Rotation Speed (RPM)	80	80	80	80
Ram (mm)	500	815	815	815
Screen Size (mm)	Φ 40	Φ 40	Φ 40	Φ 40
Number of Rotor Knives (pcs)	23+4	35+4	55+4	78+4
Number of Counter Knives (pcs)	2+2	2+2	3+3	3+3
Main Drive (kW)	18	37	55	75
Hydraulic Power Pack (kW)	2.25	3.75	5.5	5.5
Weight (kg)	Approx 1750	Approx 4200	Approx 5300	Approx 7300